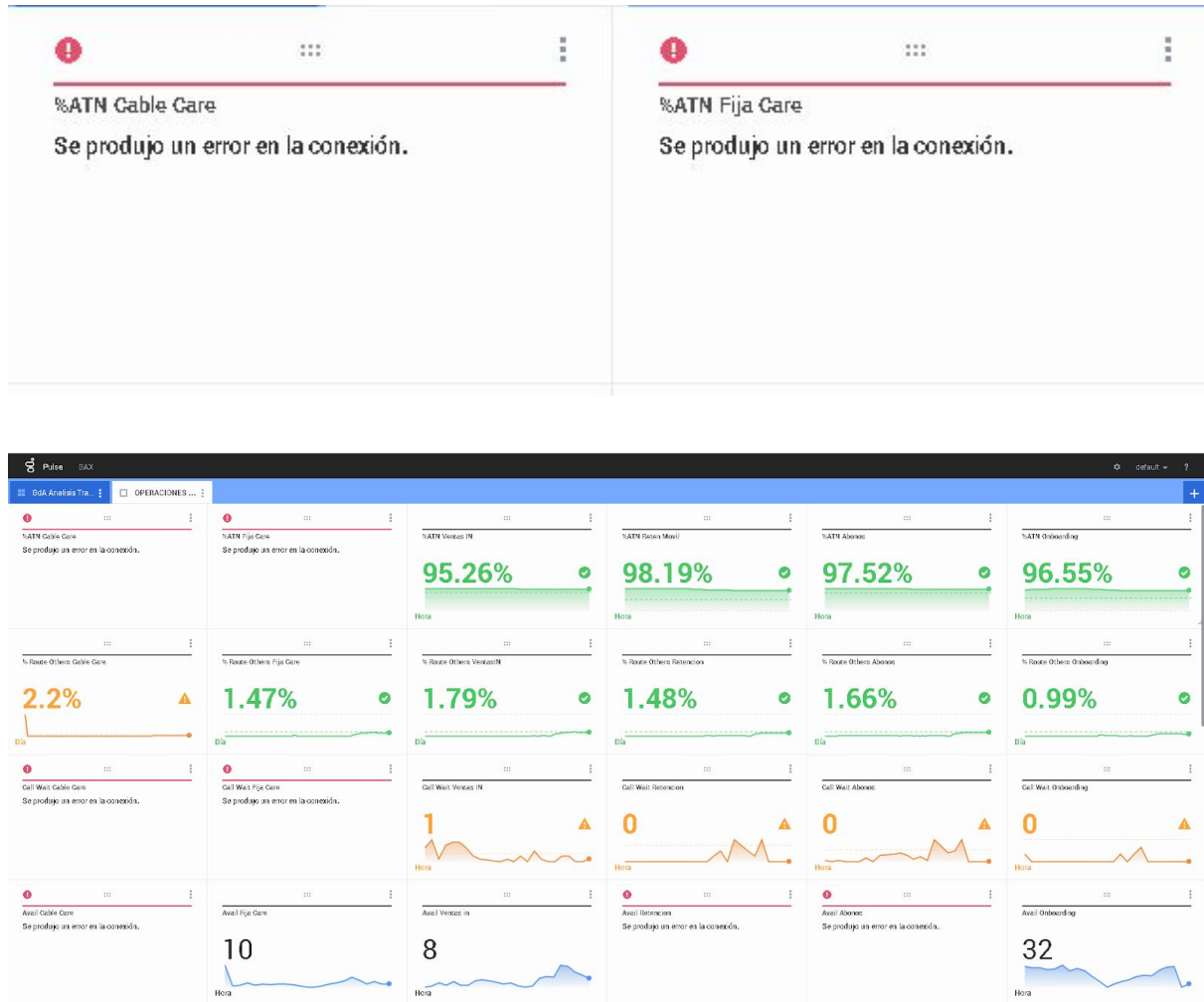


Hi dears,

We are having trouble with a Dashboard in Pulse in where severals widgets have a error the (Se produjo un error en la conexión) in english Failed Connection as you can see in the image below:



We do restart of the services Pulse Collector, Dbserver Pulse and Statserver Pulse without any good correction.

I would like to know what can be generating this error , thanks



Pulse

Versión 8.5.108.02

Versión de esquema 8.5.106.00

© 2017 Genesys Telecommunications Laboratories, Inc.

Cerrar